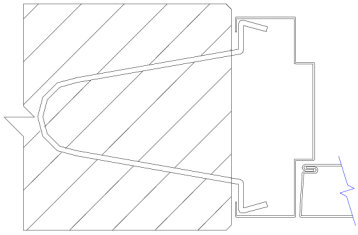
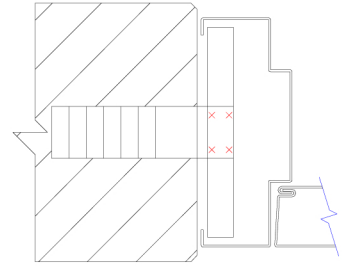




STANDARD ANCHOR APPLICATIONS

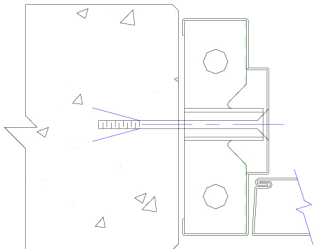


MASONRY T-STRAP & WIRE ANCHOR OPTIONS

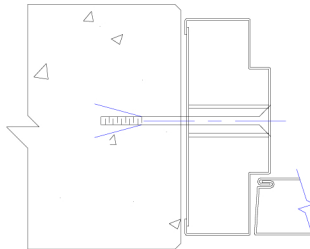


LOOSE MASONRY ANCHOR
(WIRE ANCHOR)
7ga. COLD ROLLED ①

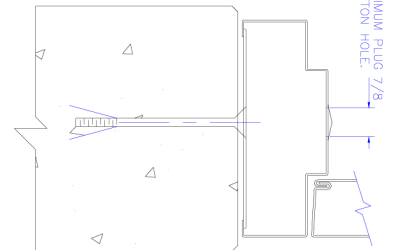
LOOSE MASONRY ANCHOR
(T-ANCHOR)
MIN 20ga. MATERIAL ②



BUTTERFLY TYPE
E.M.A. PREPARATION
20ga. MATERIAL MIN. ③A

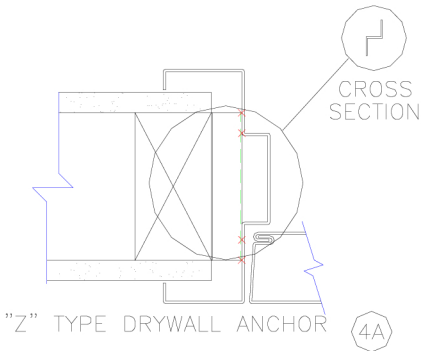


STRAP ANCHOR TYPE
E.M.A. PREPARATION
"U" CHANNEL & STRAP ③B
16ga. MATERIAL MIN.

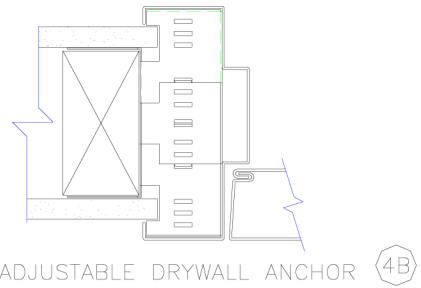


PLUG & STRAP TYPE
E.M.A. PREPARATION
STRAP 16ga. MATERIAL MIN. ③C

EXISTING MASONRY ANCHOR VARIATIONS

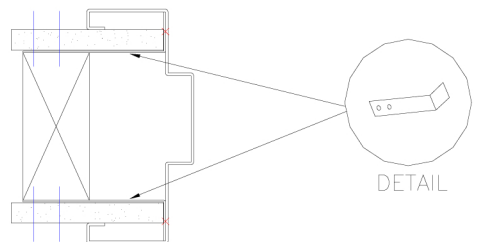


"Z" TYPE DRYWALL ANCHOR ④A



2pc. ADJUSTABLE DRYWALL ANCHOR ④B

DRYWALL ANCHOR OPTIONS



DRYWALL STRAP ANCHOR ④C